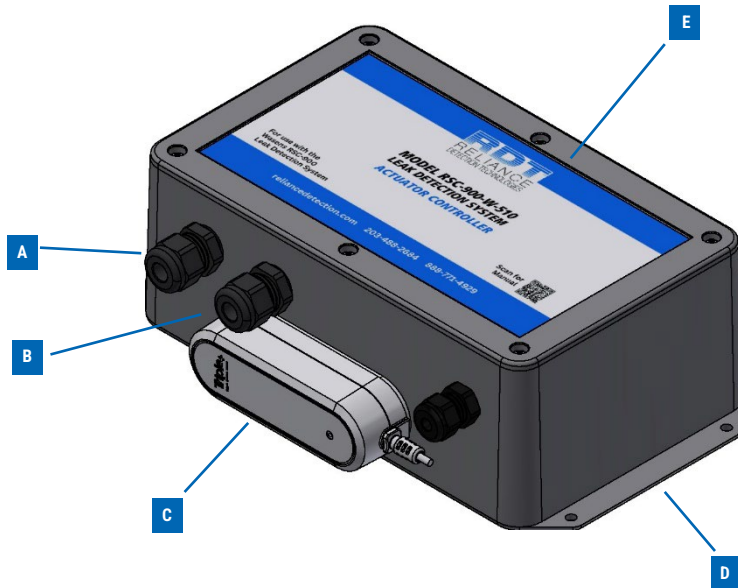


065-M055xx Actuator Controller

- A. AC Input (80-305 VAC, 47-63 Hz, 1.9A) Liquid Tight Fitting Location.
- B. Actuator Cable Liquid Tight Fitting Location.
- C. AutoSwitch Sensor
- D. Wall Mounting Bracket
- E. Cover



INSTRUCTIONS:

1. Remove cover by unscrewing 6 Philips head screws (Image 2).
2. Route AC Power Cable (not supplied) through liquid tight-fitting (Image 3A).
3. Remove barrier strip cover. Screw AC leads to appropriate terminals on barrier strip. Replace barrier strip cover. Tighten liquid tight fitting (Image 4).
4. Reinstall assembly cover. We recommend when putting the cover on, put one corner on first and push the cover towards that corner, then press down. Scan QR code for YouTube video.
5. Reinstall 6 cover screws (Image 2).
6. Connect Cable from Actuator to Cable of Assembly (Image 5).
7. Slide off AutoSwitch Housing (Image 6). See page 2 for AutoSwitch Setup.

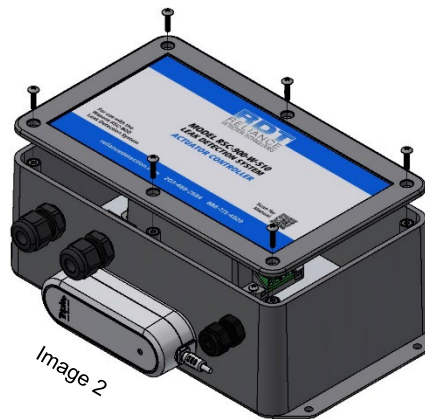


Image 2



Image 3

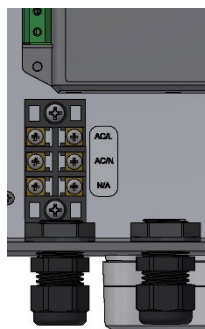


Image 4

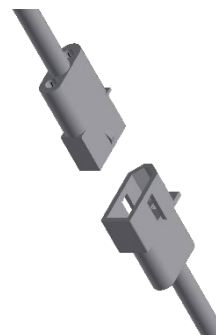


Image 5

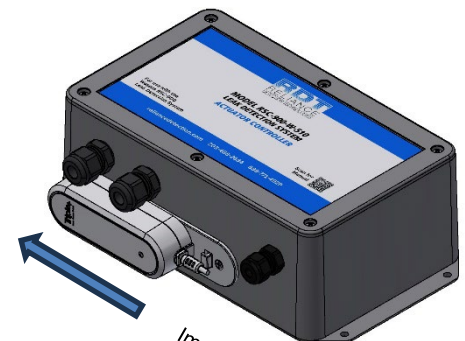


Image 6

Universal AutoSwitch Installer Guide

P/N: RSC-900-X-375

◆ Welcome

Thank you for choosing RDT RSC-900 Leak Detection. RDT RSC-900 is the ultimate IoT cloud-based system for home safety. The system is managed via an App and is designed to prevent damage due to water leakage. RDT RSC-900 system offers you a total peace of mind at home or away.

◆ Please note

Please read these instructions carefully and follow the system's installation and commissioning steps.

Maintain this document in a safe place for future reference. Contact your authorized installer with any questions.

⚠ Warning! This product was designed to prevent water leakage damages and should be used for this purpose only.

◆ RDT RSC-900 system

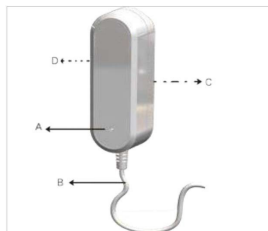
RDT RSC-900 line of products includes innovative battery-operated devices which enables the automated control of water valves. This is unified under the "Smart Home" umbrella. The RDT RSC-900 HUB serves as a Gateway that ensures a secured communication between the system devices, RDT cloud and App.

RDT RSC-900 integrates easily into the Smart Home IoT ecosystem, providing a unique cloud-based secured platform for Water Leak Management.

◆ Switch specification

Part No.	RSC-900-X-375 (AutoSwitch)
Product description	The Universal AutoSwitch allows for a two-way wireless communication and control via a radio link between the RSC-900 HUB and 3rd party Actuator. The Universal AutoSwitch commands any 3 rd party AC Powered actuator with the same functionality provided by the RDT Actuator and the Integrated Shutoff Unit. Generated a dry contact output and operates with its supplied 5VDC power supply.
Dimensions	3.1 x 9.8 x 2.8 Cm, 1.2 x 3.8 x 1.1" Cable length 30cm (1ft.)
Weight	45gr (1.58 Oz)
Power supply	5VDC Power Supply 2x AAA non-rechargeable backup batteries
Operation voltage	3V
Operating RF	868/915 MHz
Transmission range	Open space - up to 230 m (750 ft.) In enclosed space - up to 120 m (390 ft.) Avoid installing in a metal cabinet.
Working temp.	-20°C to +50°C (-4°F to +122°F)
Certifications	FCC ID: 2AFOIFLD IC: 20798-FLD

- A. LED indicator
- B. Cable
- C. Battery housing cover
- D. Wall mounting bracket



◆ Universal AutoSwitch wiring to a relay



◆ Universal AutoSwitch installation to a RSC-900 System

1. Open the battery housing cover by sliding it towards the cable (See Image 6 on page 1).
2. Insert 2X AAA batteries and verify a beeping sound.
3. Using the RSC-900 APP, add the Universal AutoSwitch to the system.
4. Perform a test by sending an 'activate' (Close) command using the RSC-900 APP, verify a clicking sound and constant red LED on the relay board.
5. Send a de-activate (Open) command and verify a click sound and the red LED turning off on the relay board (inside case).
6. As per required system operation, simulate a Flow or Leak and verify the Universal AutoSwitch automatically activates (Close in APP). The Universal AutoSwitch needs to be manually de-activated (Open inAPP) once the leak has been resolved.

◆ Relay wiring (should be performed by a certified technician).

1. The AutoSwitch is connected to a standard relay (P/N SRD -03VDC-SL-C)
2. The unit is wired to Normally Open (NO) output.

◆ Universal AutoSwitch LED behavior

- RED flashes every 10 seconds – Ongoing alarm
- GREEN flashes every 30 seconds – OK
- BLUE flashes every 30 seconds – Communication problems
- RED flashes every 30 seconds – Low battery

◆ System installation

RDT devices are installed and activated using the RSC-900 installer's APP available on AppStore and Google Play. It is recommended to test the unit before installation.

This Universal AutoSwitch is designed for internal use only and should be installed by an authorized installer.

◆ Warranty instructions

Please visit [www.https://reliancedetection.com/support/request-support/](https://reliancedetection.com/support/request-support/) for warranty, technical support, terms and conditions or troubleshooting